



VectorPro™ Software Upgrade

Technical Bulletin



Introduction

This document describes how to upgrade your VectorPro™ software to the latest version.

Manuals for related devices are available from **www.mecmesin.com**

2018 © Mecmesin Ltd, supplied with Mecmesin test systems and not for redistribution

Contents

VectorPro™ Software Upgrade	1
Technical Bulletin	1
Introduction	2
Contents	3
Updating VectorPro™	4
Previous Installation	4
Installing VectorPro™	5
Important Installation Information	8

Updating VectorPro™

Previous Installation

Important! Before installing your new version of VectorPro™, you will need to uninstall your previous version of the software.

If VectorPro™ is already installed on your PC, it is recommended you backup your database prior to updating your software. The default save location is:

- C:\ProgramData\Mecmesin\

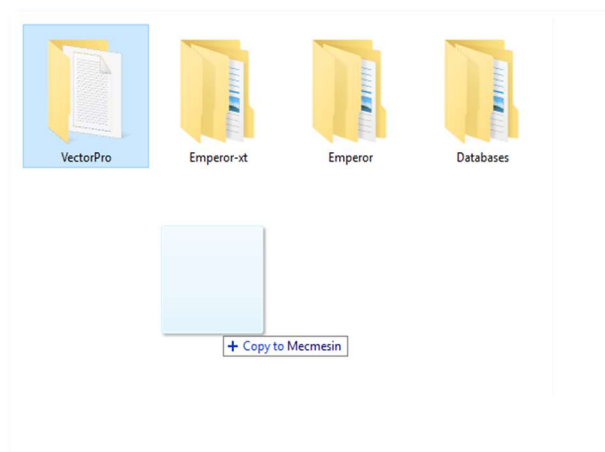
You will need to copy the entire 'VectorPro' folder to a safe location. If you are using a database in a custom location, the folder will also need to be backed up. Prior to updating, it is important to ensure there are no spaces in the address of the custom save location. If the address has spaces in it VectorPro will not be able to upgrade the database, in some instances this will stop the software from opening. For example:

- C:\Users\Mark\Documents\Test Files\

Is not an acceptable save location as it contains a space in the address between the words 'Test' and 'Files'.

- C:\Users\Mark\Documents\TestFiles\

The address above is acceptable as there are no spaces.



▲ Copying the default database to create a backup. This is recommended before installing a new version of VectorPro.

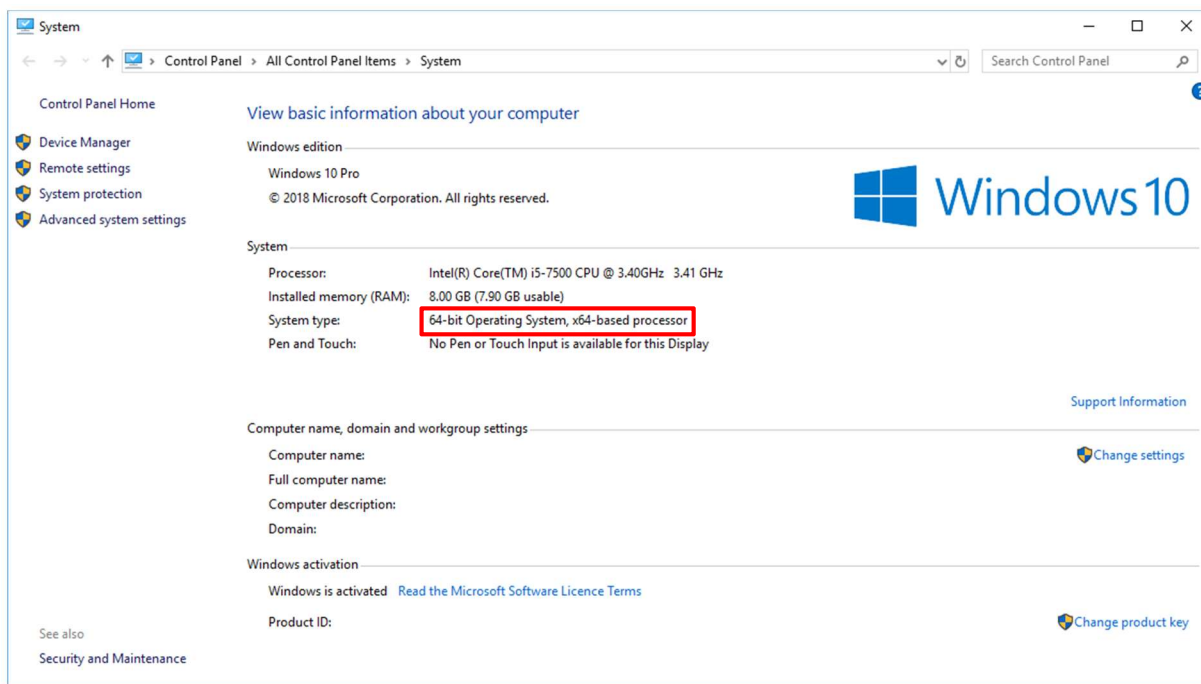
Installing VectorPro™

The required installation software is on the supplied USB key. In some instances, it may be supplied via an online download, or from a Mecmesin Web Site directly. Please do not connect your equipment until after the installation has been completed.

Step 1 - Check Your PC Specification

Before starting VectorPro™ check whether your selected PC is 64-bit or 32-bit.

If you are not sure, open Windows Explorer, navigate to 'My Computer' or 'This PC', right-click anywhere on a blank section on the screen away from an icon and select properties. Under system type, you should see either 32-bit or 64-bit; this is highlighted in the image below.

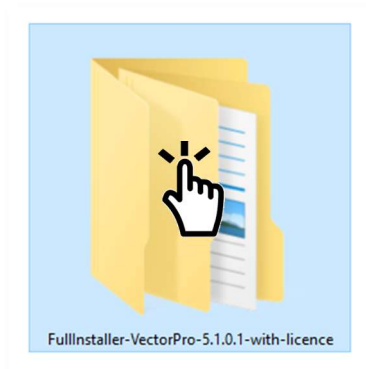


Step 2 - Locate the Installation Folder

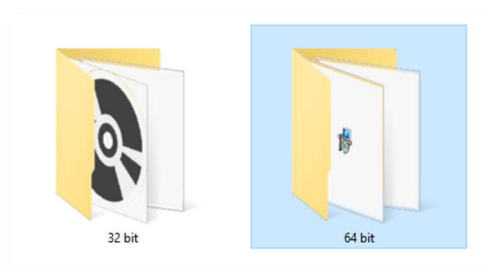
Insert your VectorPro™ key into the PC and locate your installation folder, this will be called:

- FullInstaller-VectorPro-5.2.0.0-with-licence,

For users who have been supplied the software via an online download locate the folder in your default download location.



Step 3 - Start the Installer

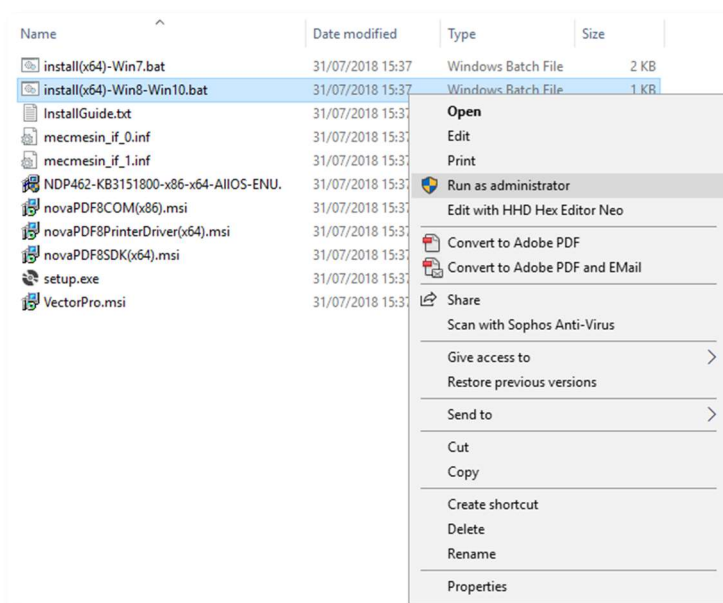


First, select either the 32-bit or the 64-bit folder depending on your computers architecture.

Within this folder, you will have the following files:

Name	Date modified	Type	Size
install(x64)-Win7.bat	31/07/2018 15:37	Windows Batch File	2 KB
install(x64)-Win8-Win10.bat	31/07/2018 15:37	Windows Batch File	1 KB
InstallGuide.txt	31/07/2018 15:37	Text Document	1 KB
mecmesin_if_0.inf	31/07/2018 15:37	Setup Information	2 KB
mecmesin_if_1.inf	31/07/2018 15:37	Setup Information	2 KB
NDP462-KB3151800-x86-x64-AILOS-ENU.	31/07/2018 15:37	Application	60,555 KB
novaPDF8COM(x86).msi	31/07/2018 15:37	Windows Installer ...	1,160 KB
novaPDF8PrinterDriver(x64).msi	31/07/2018 15:37	Windows Installer ...	19,060 KB
novaPDF8SDK(x64).msi	31/07/2018 15:37	Windows Installer ...	6,660 KB
setup.exe	31/07/2018 15:37	Application	531 KB
VectorPro.msi	31/07/2018 15:37	Windows Installer ...	15,250 KB

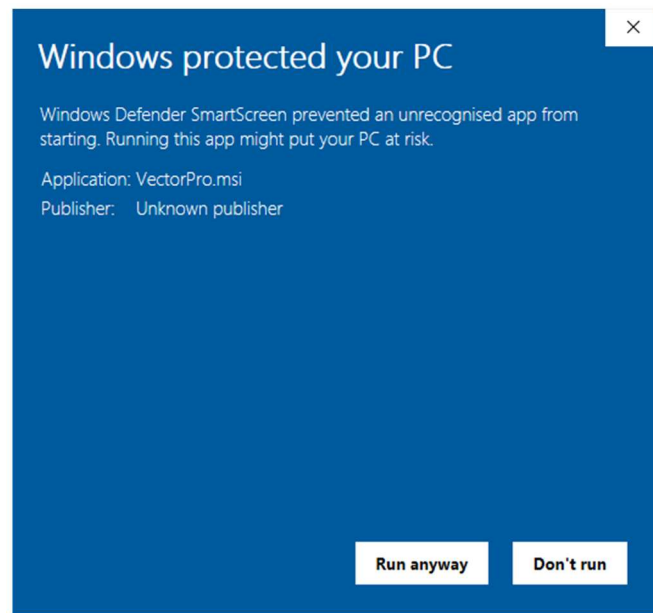
The files shown above are for a 64-bit installation, the 32-bit version file names are different.



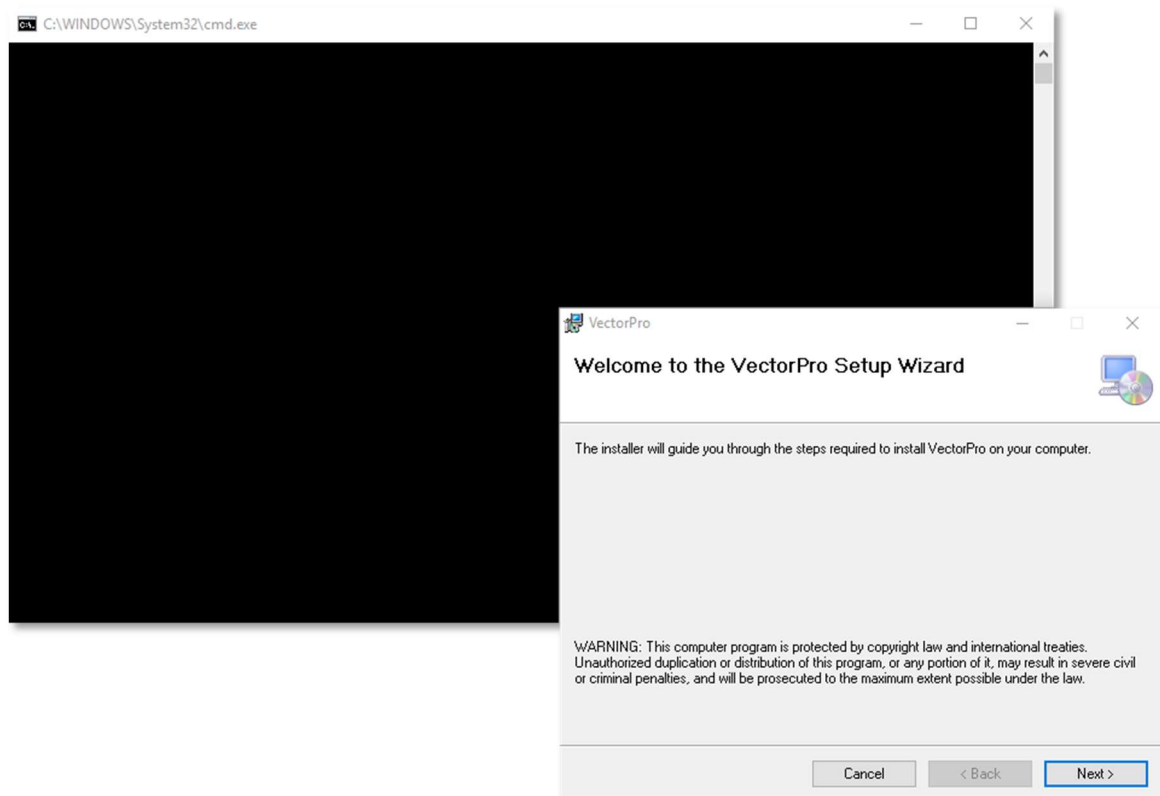
Right click on your corresponding '.bat' file and select 'Run as administrator'. Windows 7 users should use the 'install(x64)-Win7.bat' and users running Windows 8 and 10 should use the 'install(x64)-Win8-Win10.bat'

Step 4 - Installing VectorPro™

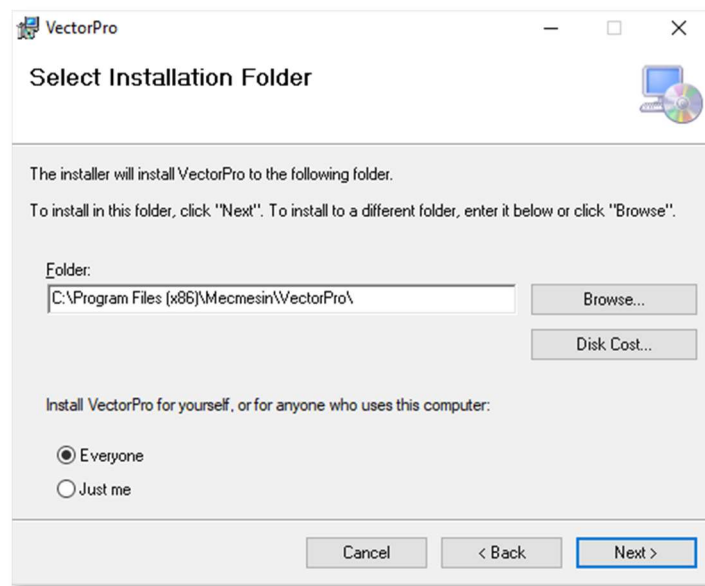
In some instances, Windows defender may prevent the installer from running and you will be presented with the screen below, please select 'More information' and then the run 'anyway' option.



The VectorPro™ installer should now appear on the screen. You should also see a black command prompt window appear, this manages the installation of VectorPro™ required drivers and PDF printing software.



Press 'Next' to continue the installation, you will then be presented with the screen below.



Here, you can select your installation location and whether the software installs for just this user or all users who access this PC. Press 'Next' to continue. Once the installer is finished press 'Close', you can now launch VectorPro.

Important Installation Information

Please ensure that all Windows user accounts that launch VectorPro™ have admin read/write access to the following locations:

- **Default database location:** C:\ProgramData\Mecmesin\VectorPro\
- **Default install location (Windows 10 example):**
C:\Program Files (x86)\Mecmesin\VectorPro
- **Custom database location:** If you have a custom database location, users must also have location admin access within Windows for this location

Note: If you are unsure how to perform this, please contact your local IT department for assistance.

Mecmesin

testing to perfection

Mecmesin: a world leader in affordable force and torque testing solutions

Since 1977, Mecmesin has assisted thousands of companies achieve enhanced quality control in design and production. The Mecmesin brand represents excellence in accuracy, build, service, and value. In production centres and research labs worldwide, designers, engineers, operators, and quality managers endorse Mecmesin force and torque testing systems for their high performance across countless applications.

www.mecmesin.com

Algeria	Estonia	Lithuania	Slovakia
Argentina	Finland	Macedonia	Slovenia
Australia	France	Malaysia	South Africa
Austria	Germany	Mexico	Spain
Bangladesh	Greece	Morocco	Sri Lanka
Belgium	Hungary	Myanmar (Burma)	Sweden
Brazil	India	Netherlands	Switzerland
Bulgaria	Indonesia	New Zealand	Syria
Cambodia	Iran	Norway	Taiwan
Canada	Ireland	Paraguay	Thailand
Chile	Israel	Peru	Tunisia
China	Italy	Philippines	Turkey
Colombia	Japan	Poland	UK
Costa Rica	Korea South	Portugal	United Arab Emirates
Croatia	Kosovo	Romania	Uruguay
Czech Republic	Kuwait	Russia	USA
Denmark	Laos	Saudi Arabia	Vietnam
Ecuador	Latvia	Serbia	
Egypt	Lebanon	Singapore	

The Mecmesin global distribution network guarantees your testing solution is rapidly delivered and efficiently serviced, wherever you are.



FS 58553

Head Office - UK

Mecmesin Limited

w: www.mecmesin.com

e: sales@mecmesin.com

North America

Mecmesin Corporation

w: www.mecmesincorp.com

e: info@mecmesincorp.com

France

Mecmesin France

w : www.mecmesin.fr

e: contact@mecmesin.fr

Asia

Mecmesin Asia Co. Ltd

w: www.mecmesinasia.com

e: sales@mecmesinasia.com

Germany

Mecmesin GmbH

w: www.mecmesin.de

e: info@mecmesin.de

China

Mecmesin (Shanghai) Pte Ltd

w: www.mecmesin.cn

e: sales@mecmesin.cn